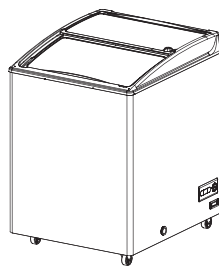
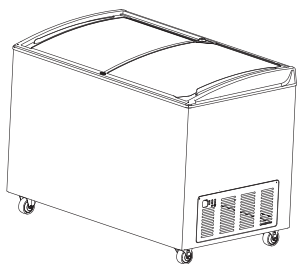


- EN Chest Freezer
User Manual
- FR Congélateur bahut
Manuel de l'utilisateur
- ES Arcón Congelador
Manual de Instrucciones
- DE Tiefkühltruhe
- IT Congelatore Orizzontale
Manuale d'Uso
- PT Congelador
Manual do Utilizador
- RU Морозильная камера
Руководство пользователя



SD-217/217L/217MF/297/297L/307/307L/307MF
SD-377/377L/377MF/427/517/517L/517LN/517MF
SD-217ESE/217LESE/217MFESE/307ESE/307LESE
SD-307MFESE/377ESE/377LNESE/377MFESE/
SD-517ESE/SD-517LNESE/517MFESE

SD-157

This product is suitable for storage frozen food, for example, ice cream, frozen dumpling, frozen fish, frozen shrimp, etc.

It is prohibited to store those articles with strict temperature requirement such as living creatures and flowers, etc.

- ◆ Read the User Manual carefully before using your appliance.
 - ◆ Keep the User Manual in a safe place.
 - ◆ Original instruction.
-

Ce produit est adapté au stockage de produits alimentaires congelés, par exemple, la crème glacée, les boulettes congelées, le poisson congelé, les crevettes etc.

Il est interdit de stocker les articles dont la température est strictement requise, tels que les êtres vivants et les fleurs, etc.

- ◆ Lisez attentivement le manuel d'utilisation avant d'utiliser votre appareil.
 - ◆ Conservez le manuel d'utilisation dans un endroit sûr.
 - ◆ Instruction originale
-

Este producto es apropiado para almacenar Alimentos Congelados, Ej: Helados, Dumpling, Pescado y Camarones Congelados, etc.

Está prohibido almacenar aquellos artículos con estrictos requisitos de temperatura como criaturas vivientes y flores, etc.

- ◆ Leer atentamente el Manual de Instrucciones antes de utilizar el Aparato.
 - ◆ Mantener guardado el Manual de Instrucciones en un lugar seguro.
 - ◆ Instrucción Original.
-

Dieses Produkt eignet sich für die Lagerung von Tiefkühlkost, z.B. Eiscreme, gefrorene Knödel, Fisch, Garnelen usw.

Es ist verboten, Gegenstände mit strengen Temperaturanforderungen wie Lebewesen und Blumen usw. zu lagern.

- ◆ Lesen Sie das Benutzerhandbuch aufmerksam durch, bevor Sie Ihr Gerät in Betrieb nehmen.
 - ◆ Bewahren Sie das Benutzerhandbuch an einem sicheren Ort auf.
 - ◆ Original-Anleitung
-

Questo prodotto è adatto per conservare cibo congelato, per esempio, gelato, ravioli congelati, pesce congelato, gamberetti congelati, ecc.

È proibito conservare quegli articoli con rigorosi requisiti di temperatura come creature viventi e fiori, ecc.

- ◆ Leggere il Manuale d'Uso attentamente prima di utilizzare il tuo apparecchio.
 - ◆ Tenere il Manuale d'Uso in un luogo sicuro.
 - ◆ Istruzioni originali.
-

Este produto é apropriado para conservar alimentos congelados, como, por exemplo, sorvete, bolinhos de massa, peixe, camarão, etc.

É proibido conservar artigos com requisitos estritos de temperatura, tais como criaturas vivas, flores, etc.

- ◆ Antes de fazer o uso do seu aparelho, leia o Manual do Utilizador com atenção.
 - ◆ Guarde o Manual do Utilizador num local seguro.
 - ◆ Instrução Original.
-

Этот продукт подходит для хранения замороженных продуктов, например, мороженого, замороженных клецок, замороженной рыбы, замороженных креветок и т. д.

Запрещается хранить предметы с жесткими требованиями к температуре, такие как живые существа, цветы и т. д.

- ◆ Перед использованием прибора внимательно прочтите Руководство пользователя.
- ◆ Храните Руководство пользователя в надежном месте.
- ◆ Оригинальная инструкция.

Contents

Before use	
Product features.....	1
Components.....	1
Safety precautions	2
Precautions for handling.....	4
Precautions for use	5
Start to use	
Installation	5
Use	6
Temperature adjustment.....	7
Maintenance and repair	
Routine maintenance.....	8
Fault clearance.....	8
Technical data	
Specifications	9
Schematic refrigeration diagram.....	9
Schematic wiring diagram	10

EC Declaration of Conformity according to the Machinery Directive 2006/42/EC

For the following equipment:

Product	: Chest Freezer
Type Designation /Trademark	: SD-157/217/217L/217MF/297/297L/307/307L/307MF/377/377L/377MF/427/ 517/517L/517LN/517MF/217ESE/217LESE/217MFESE/307ESE/307LESE/ 307MFESE/377ESE/377LNESE/377MFESE/517ESE/517LNESE/ 517MFESE/Haier
Manufacturers Name	: Qingdao Haier Special Freezer Co., Ltd.
Manufacturers Address	: Haier Garden, Qianwangang Road Economic Development Zone Qingdao, Shandong 266510 P.R. China

Refer to in this declaration conforms with the following directive(s)/standards:

2006/42/EC EN60335-1 EN60335-2-89

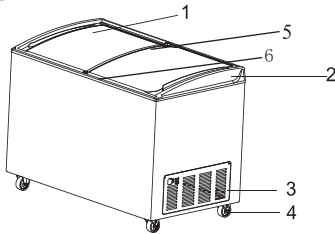
The company named above will keep on file for review the following technical documentation :

- Operating and maintenance instructions
- Technical drawings
- Risk assessment
- Description of measures designed to ensure conformity
- Other technical documentation ,e.g. quality assurance measures for design and production

Product Features

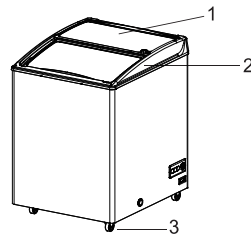
1. This series freezer newly manufactured by our company is the forth generation for commercial purpose. It combines the essence of European and Asian designing skills,adopts several unique technologies in China for the advantages elegant shape,quick refrigerating,low power consumption.It is widely used to show and sell all kinds of frozen food,most ideal for food and beverage trade.
2. Wide temperature zone can make it work as usual and keep the fresh taste of the food when the ambient temperature reaches 35℃。
3. Toughened coated heat-reflect glass can save on energy and power.
4. Latest condensation design can eliminate the condensation on the freezer lid.
5. Special lock design is safe and reliable.

Components



SD-217/217L/217MF/297/297L/307/307L/307MF/377/377L/377MF
SD-427/517/517L/517LN/517MF/217ESE/217LESE/217MFESE
SD-307ESE/307LESE/307MFESE/377ESE/377LNESE/377MFESE
SD-517ESE/517LNESE/517MFESE

- 1.Glass sliding door
- 2.Plastic frame
- 3.Grill for compressor compartment
- 4.Castor
5. Middle beam light (SD-297L/377L/517L)
6. Inner body light (SD-217L/307L/517LN/217LESE/307LESE/377LNESE/517LNESE)



SD-157

- 1.Glass sliding door
- 2.Plastic frame
- 3.Castor

Due to continuous product improvement or different requirements of different customers, your Haier refrigerator may not be fully consistent with that shown in this manual, and we hereby apologize for this. The contents of this manual are subject to change without notice.

- Please see the real product for its appearance, color or pattern.

Safety Precautions

Please always follow all important safety regulations specified in this manual; otherwise you must take full responsibility for consequences.

Please follow all precautions and regulations specified in this manual to avoid possible injury of user and any other person.

“Caution”, “prohibition” and “warning” signs are as follows:



The contents marked with this “caution” sign involve safety of both the product and the user and must be strictly followed.



The contents marked with this “prohibition” sign describe absolutely prohibitory behaviors and strictly followed; otherwise the freezer may be damaged or the user may be injured.



This sign is marked on the covers of high-voltage electric appliances to avoid electric shock. These covers must be removed by a qualified engineer or maintainer only.

- ❗ Please use special power supply marked on the freezer’s rating plate. If the voltage used is below 198V or above 264V, an automatic voltage stabilizer of above 4000W is to be installed additionally. Using any power supply of voltage or frequency other than that marked on the rating plate may result in fire hazard or electric shock.
- ❗ If the supply cord is damaged, it must be replaced by the manufacturer, its service agent or similarly qualified person in order to avoid a hazard.
- ⊘ Never use the freezer in open air. If it is exposed to rain, electric leakage or electric shock may occur.
- ⊘ Never store corrosive articles such as acid and alkali in the freezer; otherwise internal components or electric parts may be damaged.
- ❗ Never operate your freezer in the presence of explosive fumes.
- ❗ If for any reason this product requires service, it must be serviced by a certified technician.
- ⊘ Use of an extension cord is not recommended.
- ❗ Repair or replace immediately, all electric service cords that have become frayed or otherwise damaged. Do not use a cord that shows cracks or abrasion damage along its length, the plug or the connector end.
- ❗ **WARNING:** Do not use electrical appliances inside the food storage compartments of the appliance, unless they are of the type recommended by the manufacturer.

Safety Precautions

- ⊖ If your cabinet is to be discarded, you must remove the door in place. This will reduce the chance that might do harm to children. And the flammable foaming needs to be disposed by professional persons.
- ⊖ This appliance can be used by children aged from 8 years and above and persons with reduced physical, sensory or mental capabilities or lack of experience and knowledge if they have been given supervision or instruction concerning use of the appliance in a safe way and understand the hazards involved. Children shall not play with the appliance. Cleaning and user maintenance shall not be made by children without supervision.
- ⚠ Use this appliance only for its intended purpose as described in this use and care guide.
- ⚠ In case of leakage of inflammable gas such as gas, please close the valve involved in gas leakage, open doors and windows for exhaust ventilation and do not plug in freezer.
- ⊖ The freezer must not be disassembled, repaired or modified by the user himself. If an unauthorized person does so, fire hazard or personal injury may occur due to improper operation.
- ⚠ If the freezer is turned off, it should be turned on again only after at least 5 minutes in order to avoid damage to the compressor or the system. Be sure to unplug the freezer before do any repair or maintenance. Never roll or damage the power cord.
- ⚠ Freezer scrapping should be done by qualified personnel. The doors should be removed to avoid accidents such as suffocation.
- ⚠ When disconnecting the freezer's plug from the power socket, please grasp it and do not pull the power cord; otherwise electric shock or fire hazard due to short circuit may occur.
- ⊖ Never touch any electrical component such as power plug or any switch with a wet hand; otherwise electric shock may occur.
- ⊖ Do not store glass bottles or canned products in the freezer because frost crack may occur and result in personal injury.
- ⊖ Do not touch any article stored in the freezer with a bare hand. Touching a frozen article or the freezer's inner wall with a bare hand may occur frostbite.
- ⚠ At the time of repair, wear a pair of gloves to avoid injury by a sharp edge or corner.

Safety Precautions

- ⊘ If the freezer is to be left unused for a long time,unplug it to avoid electric shock,electric leakage or fire hazard resulting from aging of its power cord.
- ❗ If the freezer is to be left unused for a long time in an unsupervised area, please keep children away from it and make sure that its doors cannot be fully closed.
- ❗ The A-weighted emission sound pressure level is below 70 dB(A).
- ❗ The appliance shall be disconnected from its power source during cleaning or maintenance and when replacing parts.
- ❗ Since the flammable refrigerant is used, the handling, servicing and disposal of the appliance must comply with the instruction and local regulation.
- ❗ Since the flammable insulation blowing gases and refrigerant is used, the handling, servicing and disposal of the appliance must done by professional person and accredited organisation.
- ❗ Do not store explosive substances such as aerosol cans with a flammable propellant in this appliance.

Warning: To avoid electric shock always unplug your freezer before cleaning.
Ignoring this warning may result in death or injury.

Warning: Keep clear of obstruction all ventilation openings in the appliance enclosure or in the structure for building-in.

Warning: Do not use mechanical devices or other means to accelerate the defrosting process, other than those recommended by the manufacturer.

Warning: Do not damage the refrigerant circuit.

Warning: Before using cleaning products,always read and follow manufacture's instructions and warnings to avoide personal injury or product damage.

- ❗ The appliance should be cleaned according to the manual to meet hygiene requirements and for good performance.

The climatic class of the appliance is 7, it means that it can work in the ambient

Dry bulb temperature °C	Relative humidity %	Dew point °C	Water vapour mass in dry air g/kg
35	75	30,0	27,3

Precautions for Handling

Before unpacking the freezer,a fork lift or a bale clamping device may be used to move it.

If a fork lift is used to move the freezer,insert its forks into the both slots of collet under the bottom of the freezer.

If a bale claming device is used to move the freezer,clamp the freezer from

Precautions for Handling

the bottom of collet and only clamp both sides of the freezer.

Note: never tilt the freezer more than 45° when moving it.

Precautions for Use

- Clean the freezer with diluted neutral detergent (undiluted detergent will damage plastic composition. Please refer to the detergent instructions for the dilution method). Do not use brush, acid, gasoline, soap power polishing powder or hot water to clean the freezer because they may damage painted surface and plastic/rubber parts. Be sure to note that any volatile solvent such as gasoline must not be used on plastic/rubber parts.
- Make sure that temperature inside the freezer has been low enough before putting articles in the freezer and the articles are to be put in the freezer in batches to prevent temperature rise.
- After the freezer operates for a period of time, there will be a layer of frost on its inner wall. Thick layer of frost will affect the freezer's refrigerating effect and increase power consumption. Therefore defrost the freezer by the provided scraper when frost thickness reaches about 5mm.
- Before defrosting, please take out all articles stored in the freezer and put them in another freezer for preservation to avoid deterioration of the articles due to temperature rise.
- There are many cooling coils on the freezer's inner liner. Therefore do not remove the frost on the inner liner with any sharp tool such as knife, ice chisel or screwdriver, etc. Be careful not to scratch evaporating pipes in the process of defrosting; otherwise the freezer will fail to work normally.

Installation

Unpacking Your Freezer

Remove all packing materials. This includes the base and all adhesive tape holding the freezer accessories inside and outside.

Warning

Never ground the freezer through gas pipe, water pipe, telephone line or lighting arrester, etc.; otherwise electric shock may occur.

The power plug must be accessible after installation in order to easily disconnect the power cord from the power socket in an emergency.

The freezer's air vent must not be covered by anything.

Never install the freezer in a humid place or in a location exposed to splash/spray water; otherwise electric leakage or electric shock may occur due to lower insulation level.

Select a suitable location for the freezer on a hard even surface away from direct sunlight or heat source e.g. radiators, baseboard heaters, cooking appliances etc.

Any floor unevenness should be corrected with the leveling legs located on the front and rear bottom corners of the freezer.

Your freezer is designed for free-standing installation only. It is not designed for built-in

Installation

Commissioning

When use the refrigerator-freezer for the first time,please follow the steps:

1. After finishing installation,be sure to leave the refrigerator-freezer stationary for at least 24 hours before turning it on.
2. Connect the power cord to a special socket of proper specifications.
- 3.This refrigerating appliance is not intended to be used as a built-in appliance”

Proper Air Circulation

- To assure your freezer works at the maximum efficiency it was designed for, you should install it a location where in proper air circulation, plumbing and electrical connections.
- The following are recommended clearances around the freezer:
- Sides.....2”(50mm)
- Top.....2”(50mm)
- Back.....4”(100mm)
- Do not over fill your freezer for proper internal air circulation.

Use

Caution

Before putting articles to be stored in the freezer,make sure that the freezer's temperature range meets the temperature of these articles.Otherwise they may deteriorate for the freezer cannot reach the required temperature,resulting in loss.

Prohibition

The freezer is preservation equipment.It is strictly prohibited to put many relatively hot articles in the freezer at a time;otherwise the compressor will keep working for a long time without stopand be damaged easily and the temperature inside the freezer will not reduce. Be sure to put in articles in batche and make the temperature inside the freezer reduce in steps to desired temperature.
Do nor accelerate defrosting by using any tool or method not approved by the manufacturer.

1. Do not put too much food into the freezer or exceed the load line.
2. Proper spaces should be allowed among foods to ensure cooling air circulation.
3. Never use corrosive detegent,hot water,washing powderor acid to clean the freezer.
4. Do not use water to scour freezer.Do nor use hard brush or sreek wire brush to clean the freezer.
5. Do not use metal or sharp tools for defroting.
6. Do not use electric heater to heat up and defrost.

Use

Interior Light (SD-217L/297L/307L/377L/517L/517LN/217LESE/307LESE/377LNESE/517LNESE)

To complement the look of your food, LED light has been built into the freezer.

1. Specification: DC 12V 4.5W

2. How to replace:

·If the LED light is damaged, please contact with our after-sale service center or our special repairsector to examine and repair.



Replaceable (LED only) light source by a professional

This product contains a light source of energy efficiency class G

The following are not breakdown:

Phenomenon	Cause and settlement
There is a sound of liquid flowing in the freezer.	It is the sound of refrigerant flowing in the circulating pipeline of the refrigerating system. It is normal.
There is frost on the surface of the glass door occasional.	The air humidity is too high.Wipe it with a soft cloth only.
The refrigerating system does not work for a long time but the inside temperature is very low.	It is an indicator of high quality for its good insulation and low cooling scattering. It is normal.

Power Interruptions

Occasionally there may be power interruptions due to thunderstorms or other causes. Remove the power cord from AC ourlet when a power outage occurs.When power has restored,replug power cord to AC outlet.

Vacation and Moving Care

For long vacation or absences,unplug the freezer and clean the freezer and door gaskets. Prop doors open,so air can circulate inside.When moving always move the freezer vertically.Do not move with the unit lying down.Possible damage to the sealed system could occur.

Temperature Adjustment (preferred setting 4 position)

Adjustment of temperature:the storage temperature in the refrigerator can be adjusted by the thermostat inside the left of the compartment.To adjust the temperature,just turn the thermostat handle with a coin to a proper position according to the external ambient temperature and the food stored in the refrigerator.Turn the thermostat handle clockwise,i.e. from "0"to"7",the interior temperature will gradually reduce,and the refrigerator will stop refrigerating upon the handle is set in the "0" position.It is advisable to set the handle in lower position(by turning the handle counter clockwise) in summer while set the handle in higher position (by turning the handle clockwise) in winter.The handle is normally set in the temperature frequently and touch other parts while turning the thermostat handle.

Routine Maintenance

Warning

To avoid electric shock or personal injury, be sure to disconnect the refrigerator-freezer from power supply before carrying out any repair or maintenance. Make sure that no drug or suspended particles around the freezer will be breathed in at the time of maintenance; otherwise they may result in health hazard.

Cleaning of the freezer:

Clean the freezer body once a month. Regular cleaning retains brand-new appearance. Wipe off a little dust on shell, inner compartments and all accessories of the freezer with a dry cloth. If the freezer is very dirty, remove dirt with a clean cloth and neutral detergent, then wipe off residual detergent with a wet cloth, and finally wipe the freezer with a dry cloth. (Undiluted detergent may damage plastic parts. Please refer to the detergent instructions for dilution method.) Never pour water onto shell or into any preservation compartment of the freezer; otherwise insulation layer may be damaged, resulting in faults. Remove frost or ice on inner wall once a month.

Inner wall defrosting:

Frost usually forms near door seals, which may cause clearance between cabinet body and door seal and thus result in poor refrigerating effect. Please use the ice scraper provided with the freezer to defrost. The following procedure is the method of defrosting through emptying the freezer.

Note: Do not use any tool with any sharp edge or corner such as knife or screw driver to defrost.

1. Take out all articles stored in the freezer and put them in another freezer.
2. Disconnect the freezer from power supply.
3. Open doors and leave them open for a period of time for defrosting.
4. Wipe off water at the bottom of body with a dry cloth.
5. After cleaning the body, connect the refrigerator-freezer from power supply.
6. Put back the articles after temperature inside the refrigerator-freezer becomes low enough.

Fault Clearance

If the refrigerator-freezer goes wrong, please check the following possible fault points before asking for repair;

Failure to start:

- Is the connection of power supply normal?

Fault Clearance

Failure to start:

- Is supply voltage too low?
- Were many articles put in the refrigerator-freezer at a time?

Poor cooling:

- Is ambient temperature too high?
- Are doors closed tightly?
- Is the refrigerator-freezer away from direct sunlight?
- Is the refrigerator-freezer close to a heat source?
- Were many unfrozen articles put in freezing compartment in past several hours?

Noise:

- Is the refrigerator-freezer installed on solid ground?
- Is the refrigerator-freezer's shell contact with any object?
- Has the refrigerator-freezer been leveled through its adjustable legs?

Specifications

Technical data:

Model	Climate Classification	Classification of electricshock -proof protection	Temperature range (C)	Effective Volume (L)	Rated voltage /frequency	Input power(W)	Weight (kg)	Refrigerant	Unit dimensions D×W×H	Connection type
SD-217/217MF	Climate 7	I	≤-18	153	220-240V~50Hz	125	48	R290/56g	800x690x865	Y
SD-297L	Climate 7	I	≤-18	211	220-240V~50Hz	165	55	R290/62g	1000x690x865	Y
SD-297/307/307MF	Climate 7	I	≤-18	211	220-240V~50Hz	175	55	R290/62g	1000x690x865	Y
SD-377/377MF	Climate 7	I	≤-18	267	220-240V~50Hz	205	60	R290/72g	1200x690x865	Y
SD-427	Climate 7	I	≤-18	303	220-240V~50Hz	215	70	R290/82g	1325x690x865	Y
SD-517/517MF	Climate 7	I	≤-18	365	220-240V~50Hz	320	78	R290/92g	1550x690x865	Y
SD-217L	Climate 7	I	≤-18	153	220-240V~50Hz	129	48	R290/56g	800x690x865	Y
SD-307L	Climate 7	I	≤-18	211	220-240V~50Hz	179	55	R290/62g	1000x690x865	Y
SD-377L	Climate 7	I	≤-18	267	220-240V~50Hz	173	60	R290/72g	1200x690x865	Y
SD-517L	Climate 7	I	≤-18	365	220-240V~50Hz	240	78	R290/92g	1550x690x865	Y
SD-517LN	Climate 7	I	≤-18	365	220-240V~50Hz	320	78	R290/92g	1550x690x865	Y
SD-157	Climate 7	I	≤-18	113	220-240V~50Hz	120	38	R290/52g	590x690x845	Y
SD-217*ESE	Climate 7	I	≤-18	153	220-240V~50Hz	110	48	R290/56g	800x690x865	Y
SD-307*ESE	Climate 7	I	≤-18	211	220-240V~50Hz	137	55	R290/65g	1000x690x865	Y
SD-377*ESE	Climate 7	I	≤-18	267	220-240V~50Hz	158	60	R290/70g	1200x690x865	Y
SD-517*ESE	Climate 7	I	≤-18	365	220-240V~50Hz	200	78	R290/90g	1550x690x865	Y

Noise: For SD-157/217*/297*/307* less than 52 dB(A)

For SD-377*/427 less than 55 dB(A)

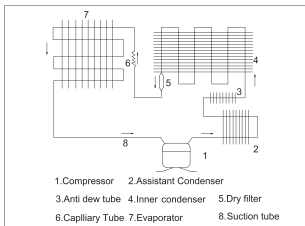
For SD-517* less than 58 dB(A)

The depth of the cabinet is 550 mm

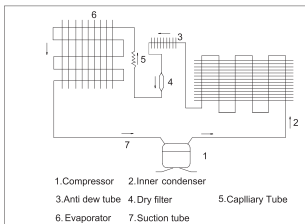
Packing list:

Qty. / Model	Name	Instructions	Plastic bag	Defrosting scraper	Key
	SD-157/217*/297*/307* SD-377*/427/517*	1	1	1	2

Schematic Refrigeration Diagram



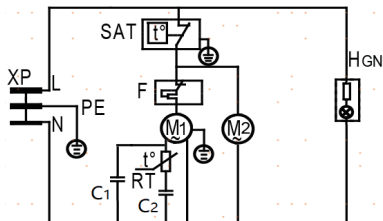
SD-217/217L/217MF/297/297L/307/307L/307MF/
377/377L/377MF/427/517/517L/517LN/517MF
SD-217ESE/217LESE/217MFESE/307ESE/307LESE/
307MFESE/377ESE/377LNESE/377MFESE/517ESE/
517LNESE/517MFESE



SD-157

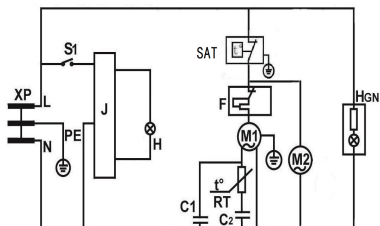
Circuit Diagram

SD-157/217/217MF/297/307/307MF/377/377MF/427/517/217ESE/217MFESE/307ESE/307MFESE/377ESE/377MFESE/517ESE/517MFESE



XP-Power Plug
SAT-Thermostat
F -Motor Protector
M1-Compressor
M2-Cooling Fan
RT-Starter
HGN-Power-on Indicator
C1-Running Capacitor
C2-Starting Capacitor (SD-517)

SD-217L/297L/307L/377L/517L/517LN/217LESE/307LESE/377LNESE/517LNESE



XP-Power Plug
S1-Light Switch
J -Switch Power
SAT-Thermostat
F -Motor Protector
RT-Starter
HGN-Power-on Indicator
H -Interior Light
C1-Running Capacitor
C2-Starting Capacitor (SD-517L/517LN)
M1-Compressor
M2-Cooling Fan

SD-517MF

